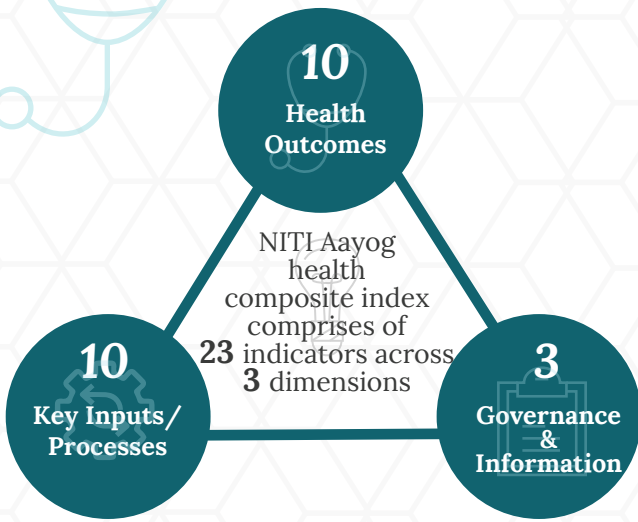


NITI Aayog Health Index: Odisha languishes while Rajasthan improved ranking

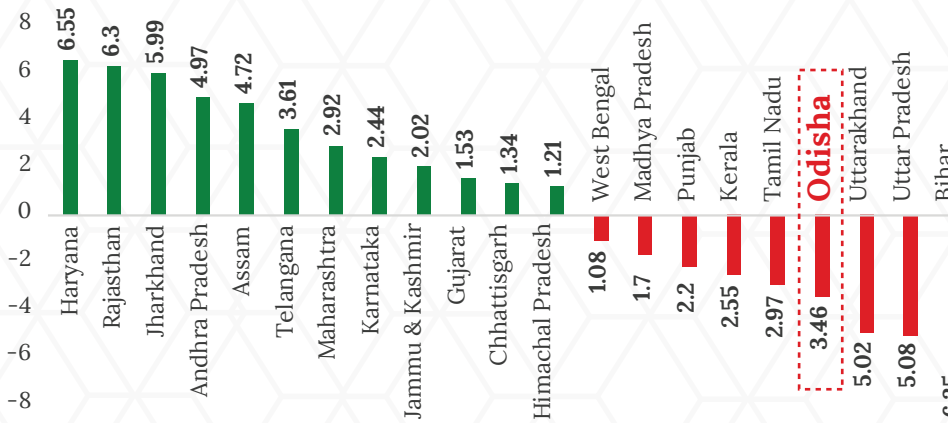


Health Index Overall Performance: Odisha slips from 18th to 19th rank, remains in bottom five states

State	Base Year (2015-16)		Reference Year (2017-18)	
	Health Index	Rank	Health Index	Rank
Madhya Pradesh	40.09	17	38.39	18
Odisha	39.43	18	35.97	19
Bihar	38.46	19	32.11	20
Rajasthan	36.79	20	43.10	16
Uttar Pradesh	33.69	21	28.61	21

Change in Rank: ↓ ↑ ↔

Incremental Change: 12 states improved while 9 declined



Odisha Health System: Key Facts

Human Resource

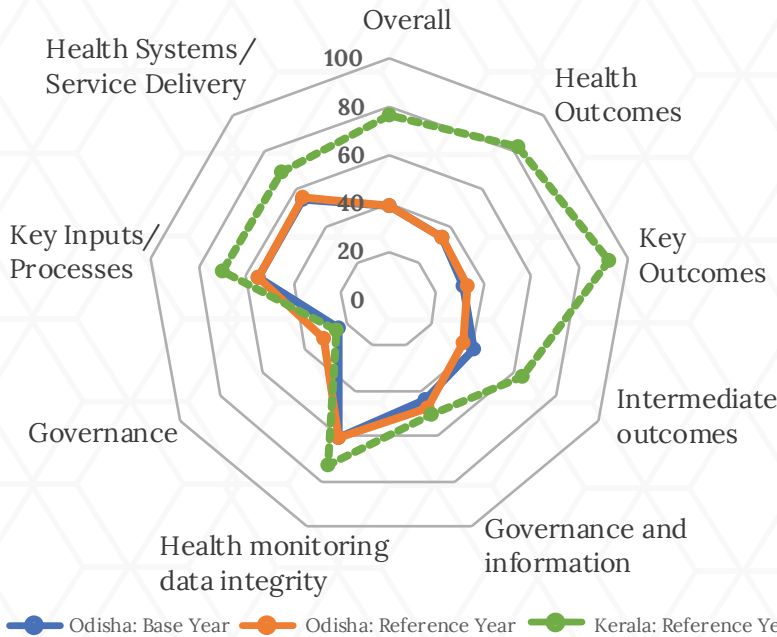
PHC (Doctors)	1288 Required	917 In Position	371 Shortfall
CHC (Total Specialists)	1508 Required	253 In Position	1255 Shortfall

Infrastructure

PHC	1315 Required	1288 In Position	27 Shortfall
CHC	328 Required	377 In Position	

Source: As on 31st March, 2018; Rural Health Statistics

Overall Performance of Odisha



8 reasons why Odisha lags behind

Indicators	Base Year	Ref. Year	Best States
Full immunization coverage	85.3%	59.8%	100.0 J & K
Proportion of institutional deliveries	73.5%	70.9%	91.7 Telangana
Total case notification rate of tuberculosis	99*	159*	67* Kerala
Treatment success rate of new microbiologically confirmed tuberculosis cases	88.9%	72.5%	91.7 Jharkhand
Vacancy of Medical Officers at PHCs	26.9%	31.9%	2.4 Kerala
Vacancy of Specialists at district hospitals	19.0%	27.4%	13.5 Kerala
Proportion of functional 24x7 PHCs	30.0%	26.4%	111.4 Chhattisgarh
Level of registration of births	98.5%	97.5%	100.0 Assam

* Per 1,00,000 population

Key takeaways:

- Odisha continues to be classified as "aspirant state" as it stays in bottom five in the overall incremental performance between 2015-16 and 2017-18.
- The decline in Odisha overall health index score is due to degraded performance on eight out of 23 indicators.
- Odisha outperforms Kerala on the "governance" dimension, but lags far behind on overall health outcomes.
- Odisha is ranked last amongst neighboring states (Jharkhand, Andhra Pradesh, Chhattisgarh, West Bengal) on the overall health index score.