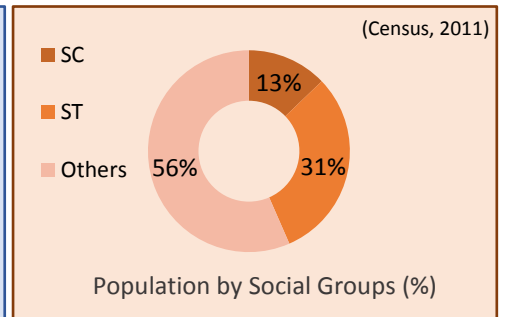
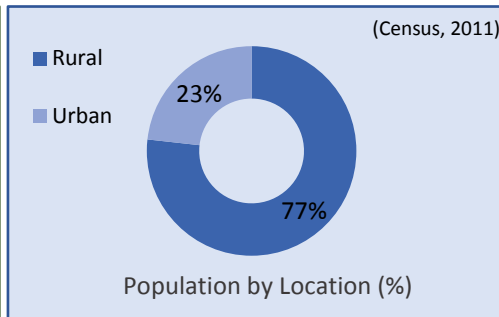
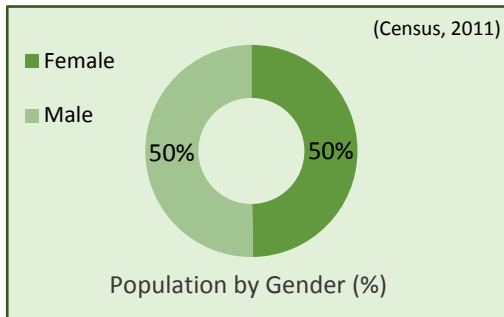


# Chhattisgarh

## Demographics

**Population Size 255,45,198** (Census, 2011)



**Crude Birth Rate (CBR)**  
**23.2**  
(AHS, 2012-2013)

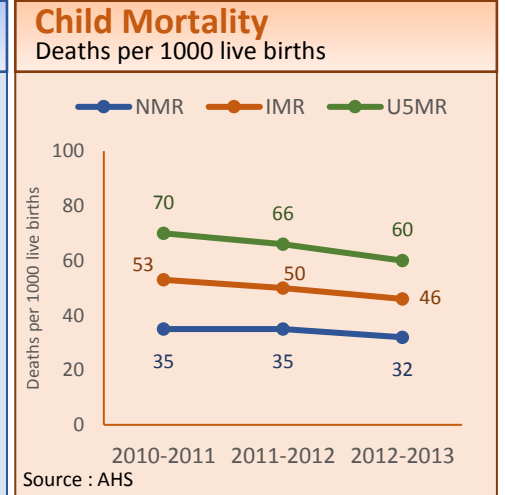
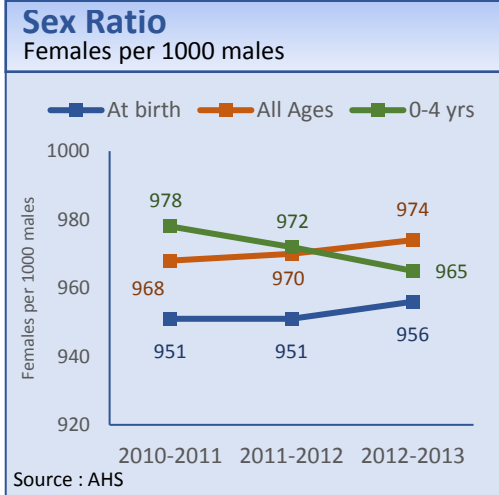
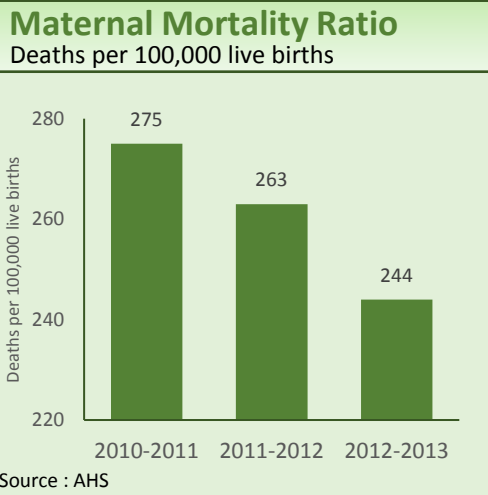
**Crude Death Rate (CDR)**  
**7.3**  
(AHS, 2012-2013)

**Prevalence of any type of Disability**  
(Per 100,000 population)  
**1871**  
(AHS, 2012-2013)

**Work Participation Rate 15 yrs and above**  
**Total**  
**54.4**  
(AHS, 2012-2013)

**Male**  
**72.8**  
(AHS, 2012-2013)

**Female**  
**35.5**  
(AHS, 2012-2013)



## Maternal & Child Health

**Currently Married Pregnant Women aged 15-49 years registered for ANC (%)**  
**83.9**  
(AHS, 2012-2013)

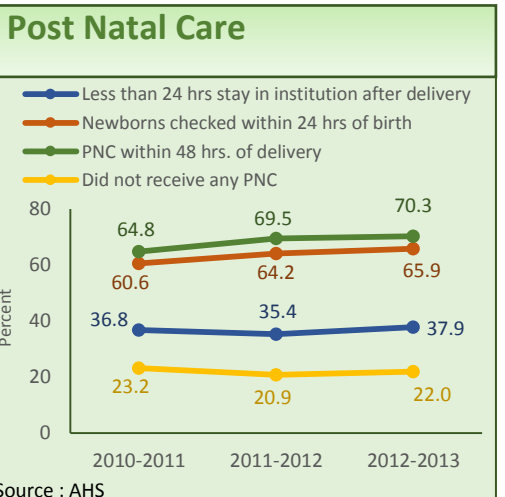
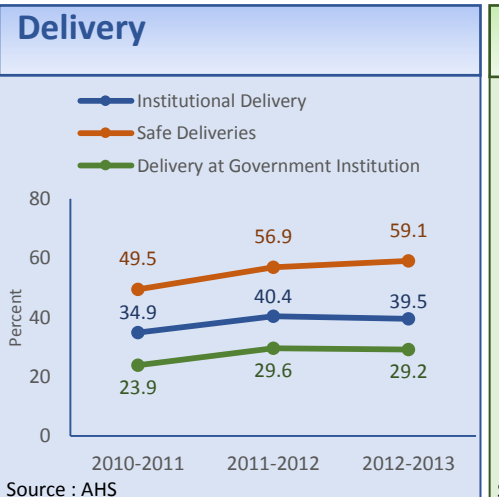
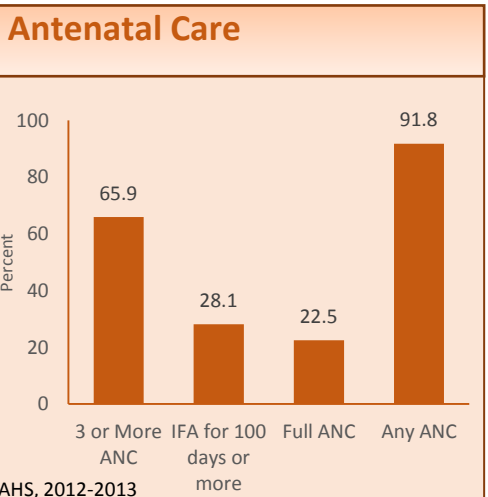
**Mothers who had ANC in the first trimester (%)**  
**73.6**  
(AHS, 2012-2013)

**Mothers who availed financial assistance for delivery under JSY (%)**  
**34.0**  
(AHS, 2012-2013)

**Mothers who availed financial assistance for Institutional delivery under JSY (%)**  
**75.1**  
(AHS, 2012-2013)

**Less than 24 hrs stay in institution after delivery (%)**  
**37.9**  
(AHS, 2012-2013)

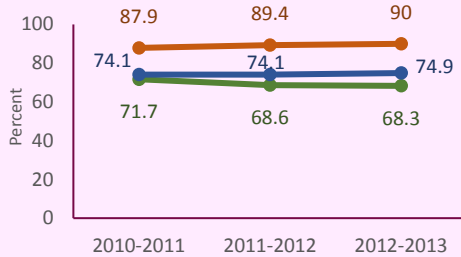
**Newborns who were checked up within 24 hrs. of birth (%)**  
**65.9**  
(AHS, 2012-2013)



## Maternal & Child Health

### Immunisation

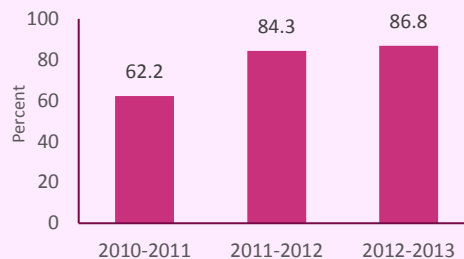
- Children (0-23 mo) received measles vaccine
- Children (0-23 mo) received vitamin A
- Children (0-35 mo) fully immunized



Source : AHS

### Awareness of HIV/AIDS

Women who are aware of HIV/AIDS

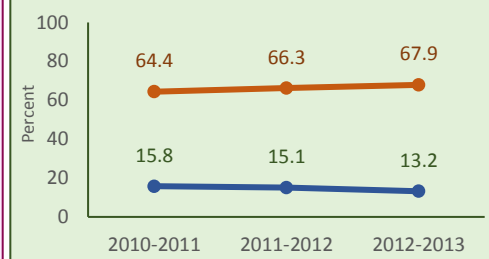


Source : AHS

## Nutrition

### Birthweight

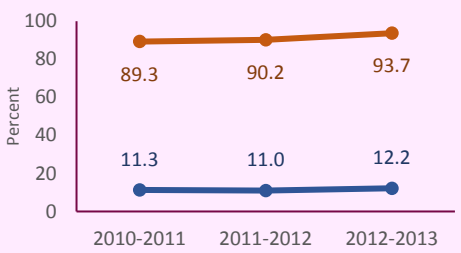
- Children whose birth weight was taken
- Children whose birth weight was less than 2.5 Kg



Source : AHS

### Child Diseases

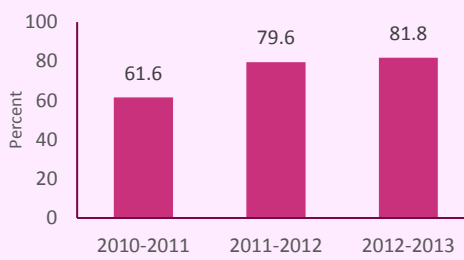
- Children suffering from Diarrhoea
- Children suffering from Diarrhoea who received HAF/ORS/ORT & Zinc



Source : AHS

### Awareness of RTI/STI

Women who are aware of RTI/STI



Source : AHS

### Breastfeeding Practices

- Children breastfed within one hour of birth
- Children (aged 6-35 months) exclusively breastfed for at least six months

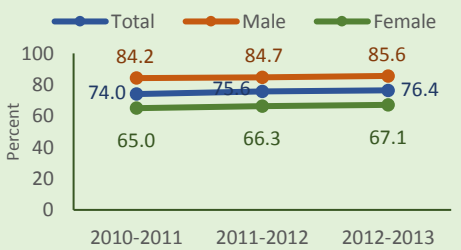


Source : AHS

## Education

### Literacy Rate

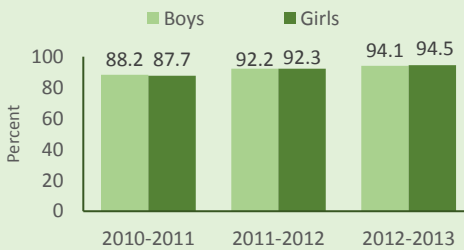
Literacy rate (age 7+)



Source : AHS

### Attending School

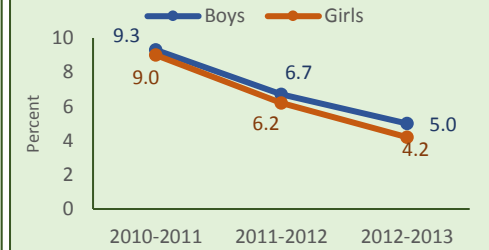
Children currently attending school



Source : AHS

### Dropout Rate

Children attended before/Dropout aged 6-17 yrs

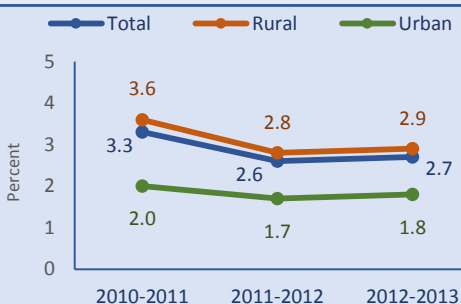


Source : AHS

## Protection

Boys aged 5-14 yrs engaged in work 2.8  
Girls aged 5-14 years engaged in work 2.6  
(AHS, 2012-2013)

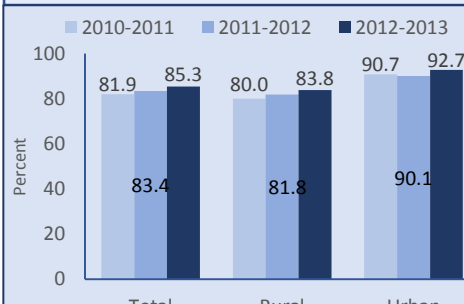
### Children Aged 5-14 Years Engaged In Work



Source : AHS

Children whose birth was registered and received Birth Certificate 54.1  
(AHS, 2012-2013)

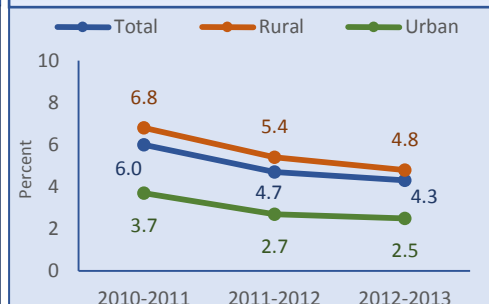
### Birth Registration



Source : AHS

Women aged 15-19 years who were already mothers or pregnant at the time of survey 40.2  
(AHS, 2012-2013)

### Marriages Among Females Before Legal Age (18 yrs)



Source : AHS

- Note:
- Data in this factsheet have been sourced from Census, Annual Health Surveys (AHS).
  - For charts with single time period, data available for most recent time period has been used.